

# BUCYRUS-ERIE COMPANY

## 500-W DRAGLINE EXCAVATOR

### WALKING TRACTION MOUNTING—ELECTRICALLY DRIVEN

### SPECIFICATIONS

*Net weight, approximate (with bucket).....	1,112,000 lbs.
Working weight, approximate (with bucket).....	1,297,000 lbs.
Ballast required, furnished by purchaser (volume: not over 1050 cu. ft.).....	185,000 lbs.
Shipping weight, prepared for export, approximate.....	1,149,000 lbs.
Ships option tons .....	940

\*Add 23,000 lbs. blocking on cars when estimating freight for domestic delivery.

**Walking Traction Mounting:**

Width and length of shoes .....	8'-0" x 37'-0"
Bearing area of both shoes .....	425 sq. ft.
Diameter of cam .....	5'-3"
Length of step (approximate) .....	7'-4"
Overall width over shoes .....	46'-0"
Diameter of walking shaft .....	18"
Walking speed, normal motor speed .....	0.18 mi. per hr.

**Base:**

Outside diameter .....	32'-0"
Bearing area .....	804 sq. ft.
Diameter of rail circle .....	27'-0"
Number and diameter of rollers .....	80 - 9"
Pitch diameter swing rack .....	20'-8"

**Revolving Frame:**

Width & length, upper mach'y frame approx. ....	27'-0" x 50'-3"
Depth of girders, upper machinery frame .....	24"
Depth of girders, sub-frames .....	6'-0"

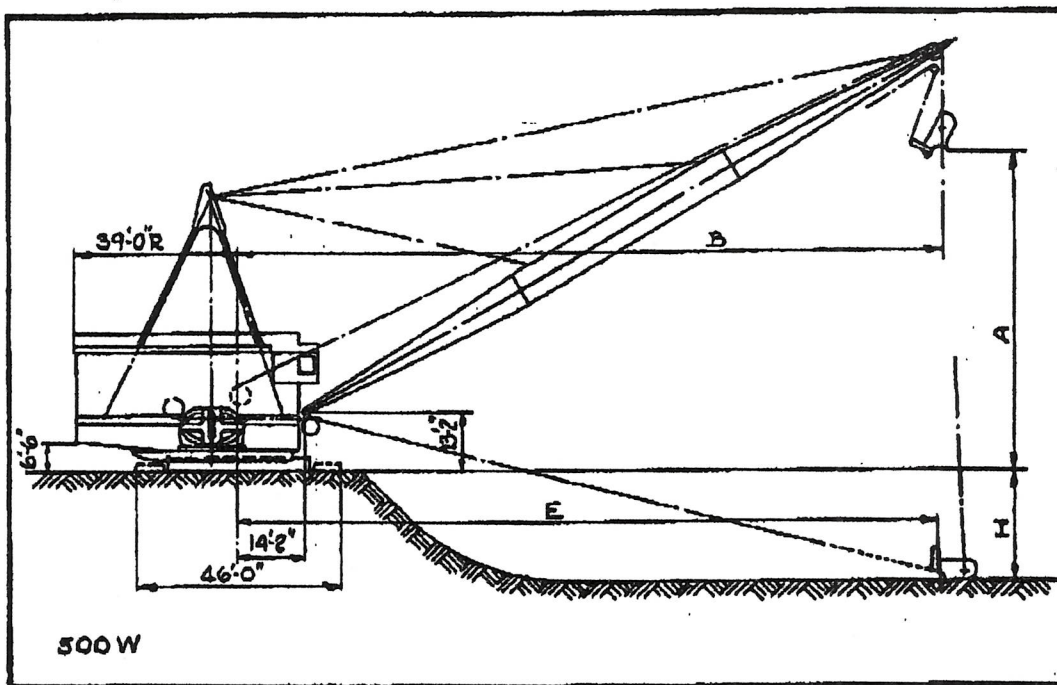
**Machinery:**

Boom length .....	175'	195'	215'
Hoist drum, P. Diameter .....	50"	50"	50"
Hoist rope, Diameter, single .....	2"	1 3/4"	1 1/2"
Drag drum, P. Diameter .....	48"	48"	48"
Drag rope, Diameter, (twin) .....	1 1/2"	1 3/4"	1 1/2"
Hoist rope sheave, boom point .....	85" P. D.		
Boom lines—18 part .....	1 1/4"		

**Electrical Equipment—Ward Leonard:**

Hoist motors (Blown) .....	2-187 1/2 H. P. Cont. 75° C.
Drag motors (Blown) .....	2-187 1/2 H. P. Cont. 75° C.
Swing motors (Blown) .....	2-94 H. P. Cont. 75° C.

Generators for Ward Leonard control are equivalent in capacity to their respective motors and are driven by suitable synchronous motors.



### WORKING RANGES

*12 yd bucket*

	175'			195'			215'		
	62,000			51,000			41,000		
Capacity of bucket .....	12 cu. yd.			10 cu. yd.			8 cu. yd.		
Angle of boom .....	25°	30°	35°	25°	30°	35°	25°	30°	35°
Dumping height, approximate .....	A 60'	73'	87'	71'	85'	100'	81'	98'	113'
Dumping reach, approximate .....	E 174'	166'	160'	193'	185'	176'	211'	203'	192'
Digging reach, approximate, under boom point .....	E 177'	169'	163'	196'	188'	179'	214'	206'	195'
Digging depth, varies with conditions .....	H 105'	95'	85'	115'	105'	90'	120'	115'	100'
Depth bucket can be lowered, std. ropes .....	H1 110'	100'	95'	120'	110'	100'	125'	120'	105'